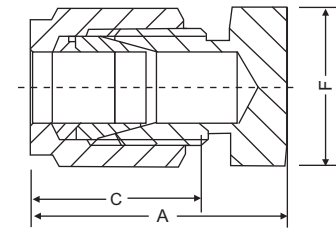


CAP



Dimensional Details :



Notes : Drawings are not to scale

Dimension, in.

Tube OD	Part Number	A	C	F
1/8	K2CP2	0.79	0.50	7/16
1/4	K4CP4	0.92	0.60	1/2
3/8	K6CP6	1.01	0.66	5/8
1/2	K8CP8	1.15	0.90	13/16
5/8	K10CP10	1.18	0.96	15/16
3/4	K12CP12	1.24	0.96	1 1/16
7/8	K14CP14	1.34	1.02	1 3/16
1	K16CP16	1.51	1.23	1 3/8

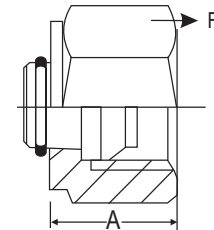
Dimension, mm.

Tube OD	Part Number	A	C	F
6	KM6CPM	23.1	15.3	1/2
8	KM8CPM	24.5	16.2	9/16
10	KM10CPM	26.6	17.2	11/16
12	KM12CPM	29.1	22.8	13/16
16	KM16CPM	29.9	24.4	15/16
18	KM18CPM	31.4	24.4	1 1/16
20	KM20CPM	34.0	26.0	1 3/16
25	KM25CPM	38.5	31.3	1 3/8

PLUG



Dimensional Details :



Notes : Drawings are not to scale

Dimension, in.

Tube OD	Part Number	A	F
1/8	K2PL2	0.47	7/16
1/4	K4PL4	0.50	9/16
3/8	K6PL6	0.56	11/16
1/2	K8PL8	0.69	7/8
5/8	K10PL10	0.69	1
3/4	K12PL12	0.69	1 1/8
7/8	K14PL14	0.69	1 1/4
1	K16PL16	0.81	1 1/2

Dimension, mm.

Tube OD	Part Number	A	F
6	KM6PL	12.7	14
8	KM8PL	13.5	16
10	KM10PL	15.1	19
12	KM12PL	17.4	22
16	KM16PL	17.4	25
18	KM18PL	17.4	30
20	KM20PL	17.4	32
25	KM25PL	20.6	38

Note:

- A and C dimensions are typical finger-tight

Dimensions and specifications shown are approximate, may vary from time to time.

Ventil tube fittings are ordered by part numbers as listed in this catalogue and other sizes will be available on request.